

NPF Newsletter – March 2021



NEWHAM PARENT FORUM
Empowering Parents and Influencing Services

Who we are?

NPF is a voluntary group of Parents and Carer of children and young people (0-25) with special/additional needs and disabilities (SEND) living in the London Borough of Newham. We work closely with the Local Authority and Newham NHS and Clinical Commissioning Groups and we also work in partnership with other local support groups so that collectively, we can make a real difference.

We also provide a range of information and signposting services as well as providing a platform for Newham Parent/Carers to:

- *Express their views*
- *Meet other parent/carers*
- *Influence current and future services*

Important Dates for your Dairy

Thursday 25th March 2021 @ 6p.m.

Webinar:

Vaccines with East London Foundation Trust Paediatrician, Newham GPs, Public Health and Newham CCG

(please see attached flyer for joining details)

Thursday 1st April 2021@ 10.30 – 12.30 p.m.

NPF, Tower Hamlets and City Parent/Carers Forums

Hosting a joints Workshop

Parent and Carers

Essential Self-Care

(please see attached flyer for joining details)

Monday 19th April 2021

Newham Local Authority in Partnership with Newham CCG invite parent/carers to join them for a Zoom Event:

We Are Newham

Working Together for Children and Families with SEND.

- **What is on offer and how to access it**

This is a 'Information sharing event with and for parents.

Contact Us On:

Newham Parent Forum

St Marks Community Centre,
Office Room 12,
218 Tollgate Road,
Beckton,
E6 5YA

Phone: 07495021062

Email:

Info@newhamparentforum.co.uk

Website:

<https://www.newhamparentforum.co.uk>

Facebook:

Newham Parent Forum

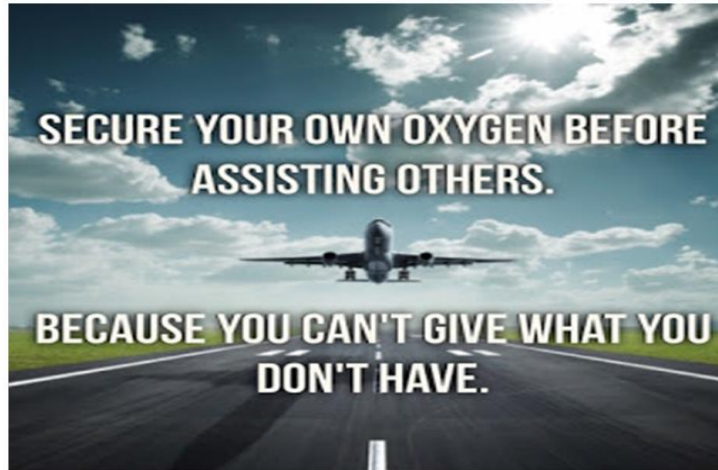
Twitter:

@NPF_SEND_Parent

If there's a Service or subject that you would like us to cover in a coffee morning, please contact us as above.

Parent and Carers Essential Selfcare

Hosted by Depression Changes Minds



Tower hamlets, Newham and City Parents forums are hosting a joint workshop Join us on zoom

Thursday 1st April 10.30am-12pm 2021

Booking link below

<https://www.eventbrite.co.uk/e/parent-and-carers-essential-self-care-tickets-146237374925>

We may not be able to fly on planes right now, but we can certainly take the solid advice from the stewardess and bring it into our homes, "Put on your own oxygen mask before helping those around you".

Trying to balance and fulfil so many roles for our young people, being their parents/carers, teachers, and friends it's more important than ever that we look after ourselves.

Exploring those tricky times of the day, and how we can avoid them escalating, and how to be kinder to ourselves, take some time for ourselves, and remembering to aim for some goals of our own.





0-25 service
02033733280

CAMHS 02077715888
SENDIASS 02033730707
NHS 111
HELPNEWHAM
02033733799

THURSDAY 25TH MARCH 2021 6PM

**NEWHAM PARENT FORUM
WEBINAR FOR PARENT/CARERS ON
VACCINES WITH ELFT PAEDIATRICIAN,
NEWHAM GP, PUBLIC HEALTH AND
CCG**

Thursday 25th March at 6pm

Topic;

**Vaccinations for young people in priority group 4
and group 6 and their parents/carers**

Group 4

- Young people aged 16-17 who are clinically extremely vulnerable
- Children and young people aged 12-18 who are:
 - Regularly in specialised residential care settings- hospice, short breaks etc.
 - AND have neurodisabilities
 - AND tend to have recurrent respiratory tract infections.

Newham Parent Forum would like to know what areas our families would like us to cover over the next 6 months

<http://www.newhamparentforum.co.uk>

Keep a look out for our wellbeing events

NEWHAM PARENT FORUM
St Marks Community
Centre,
Room 12,
218 Tollgate Road,
Beckton,
E6 5YA
Tel:07485021062

(GP or consultant advice will be required for children aged 12-16 before they can be vaccinated as currently the vaccine is only licensed for 16+)

- Young people aged 16-17 who work in frontline health and social care settings (or training in)

Priority Group 6

- Young people aged 16-17 who have underlying health conditions – chronic respiratory, cardiac, kidney or liver diseases, diabetes, morbid obesity, immunosuppression, asplenia, or dysfunction of spleen
- Young people aged 16-17 with chronic neurological diseases – including severe/profound LD, epilepsy, cerebral palsy, Downs syndrome
- Young people aged 16-17 with a serious mental illness (SMI) e.g. bipolar disorder
- Young carer's aged 16+

Join Zoom Meeting

<https://us02web.zoom.us/j/82050205660>

Meeting ID: 820 5020 5660

One tap mobile

+441314601196,,82050205660# United Kingdom

+442030512874,,82050205660# United Kingdom

Dial by your location

+44 131 460 1196 United Kingdom

+44 203 051 2874 United Kingdom

+44 203 481 5237 United Kingdom

+44 203 481 5240 United Kingdom

+44 203 901 7895 United Kingdom

Meeting ID: 820 5020 5660

Find your local number: <https://us02web.zoom.us/j/kcOgSiGU98>

Email:

info@newhamparentforum.co.uk

Facebook: Newham Parent Forum

Twitter:
[@ANPF_SEND_Parent](https://twitter.com/ANPF_SEND_Parent)

Newham Local offer.



IN THE LAST FEW MONTHS AND SINCE THE BEGINNING OF COVID-19

This last year has been a very difficult year for everyone, and especially for parent and carers of children and young people with additional needs.

That said, we want to acknowledge the brilliant job done by Newham/parents during these unprecedented times.

Well done all.

Hopefully we are heading for sunnier days.



Things we have been able to do in the last year:

- ✚ We continue to represent parent/carers in our partnership work with the LA and CCG
- ✚ A range of Zoom Covid-19 Coffee Mornings in partnership with the Local Authority SEND Team.
- ✚ We also ran a Zoom session with four Newham Councilor's in relation to SEND matters
- ✚ We worked closely with The 5Es (a local charity that supports Families and young people with SEND), to provide specialist Food Top-ups via a £5000 grant which was kindly donated by the Local Authority.
- ✚ We held a very successful End of Year Zoom Celebration

Some Important Introductions:

We Welcome Roz Pither as the Interim Head of Special Educational Needs and Disability (SEND)



Hello! I am Roz Pither and I am the Interim Head of Service for SEND here in Newham.

I am originally a teacher by profession, have worked in special education all of my career, from London to the south west, Manchester to Swindon and now back to London. I loved working as a pre-school advisory teacher, and working with families led to my training as an early years audiologist, being part of the development work for the national Early Support programme and then a local authority lead for the Aiming High short breaks programme. I have had the privilege of managing area wide special needs services across Berkshire, Somerset and Swindon and this has helped me see what challenges we in Newham share with the national picture, where we have our strengths and innovative ways of working, and also our own particular characteristics that make Newham special.

I have been delighted to have had the chance to work with the Newham Parent Forum since I started in late December and to have had such help in understanding the challenges and priorities for us in Newham.

I am looking forward to meeting members of the forum after Easter through zoom. I have discovered very fierce commitment to SEND from parents, practitioners and leaders in the Local Authority and Health; there is a real appetite to improving SEND in Newham and I am very keen to have the forum's help in doing as much as we can as fast as we can. I know from experience the difference a parent carer forum and its membership and network, can make to getting the right improvements in place.

Roz

We welcome our new Director of Education, Inclusion and Achievement



Hello Newham Parent Forum

I would like to take this opportunity to introduce myself to you as the new permanent Director of Education here in Newham. I am one month into the role and very much look forward to meeting you in the coming weeks. I started my career as a teacher and senior leader for SEND provision for 14–24-year-olds over 17 years ago. I am committed to using my experience of working with children and young people with additional needs to develop our offer in Newham. Part of my role is to ensure that we make SEND a priority for the Local Authority and work with all our partners to ensure we have a high-quality offer that works together to enable children and young people to achieve the best possible outcomes.

As we strengthen our partnership working, your role as members of the forum is integral to how we move forward together to achieve the best outcomes to meet the needs of our children and their families. I know how important it is that we listen to you, to what you see is working well as well as being able to hear your challenge when changes or improvements need to be made.

You know Newham, our children and families. You know their strengths and the challenges they face. The next few months will need us to continue to work in new ways and build on the work that has already taken place with the help of the forum. Working collaboratively creates the opportunity for us to do this well and I welcome conversations with you as to how we achieve this.

Best wishes

Anita Stewart

Professor Geoff Lindsay appointed as Chair of Newham SEND Commission



An independent Chair has been appointed to lead Newham's SEND Commission which will be developing recommendations to inform Newham's SEND Strategy 2022-27. The Commission will act as an independent evidence gathering forum, providing models of best practice and exploring key lines of enquiry which arise from stakeholder interviews and research.

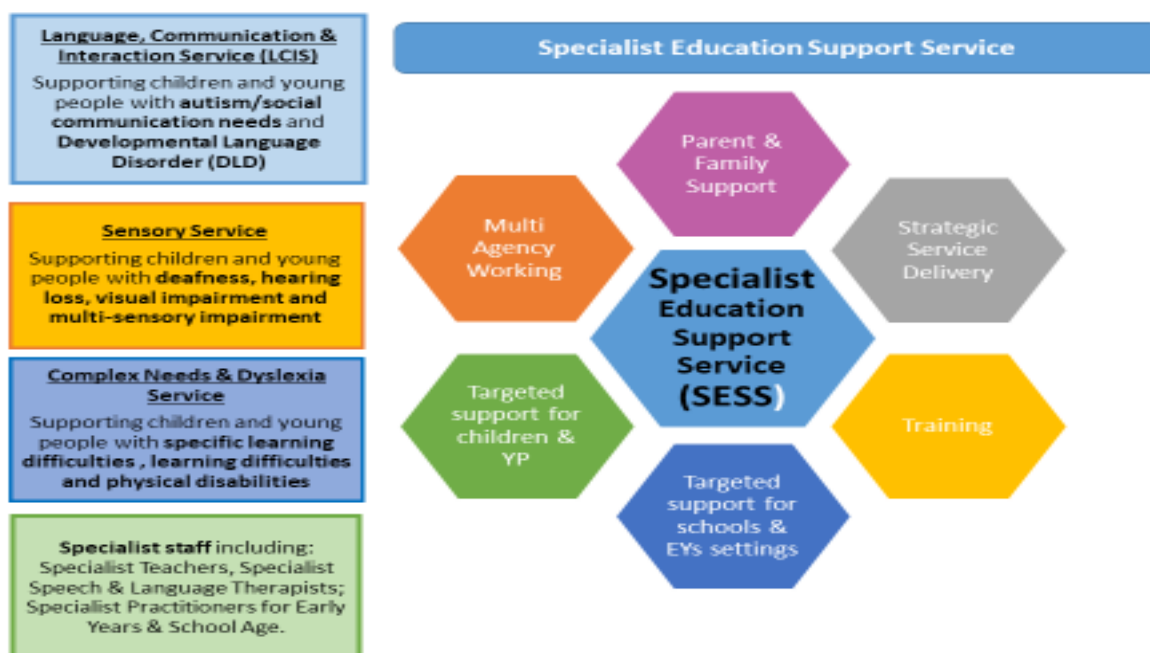
Professor Lindsay was the Director of Centre for Educational Development, Appraisal and Research (CEDAR), University of Warwick, from 1999 until he retired at the end of 2020. He is now Emeritus Professor at Warwick. Geoff was Specialist Adviser to the House of Commons Select Committee on Education for its consideration of the Bill which subsequently became the Children & Families Act, 2014. His research includes the early formative evaluation of the [Early Intervention Foundation](#), the Parent Gym parenting programme, the sustained implementation of parenting programmes by local authorities after the end of the [Parenting Early Intervention Programme](#), and of the [Review of arrangements for disagreement resolution \(SEND\)](#) an important element of the Children and Families Act 2014. Geoff was the Chair of the Inclusion Commission, Birmingham City Council (2017-18) and a member of the decision-making panel for the independent review following up the outcomes of the Bercow Review 2008 of provision for children and young people with speech and language needs: [Bercow-Ten Years On](#).

Before joining the University of Warwick in 1995 he was the Principal Educational Psychologist of the Sheffield Psychological Service and a past President of the British Psychological Society (BPS) and for many years led the BPS's initiative to secure the statutory regulation of psychologists. He was also the Convener of the Standing Committee on Ethics of the European Federation of Psychologists Associations 1999-2009.

Professor Lindsay will be working with Newham Parent Forum to develop the mechanisms for evidence gathering from parents and carers to capture their experiences, ideas and suggestions. All views will be treated as confidential and non-attributable unless you advise otherwise with respect to your personal views.

Specialist Education Support Service

Please see below information regarding the Specialist Education Support Services at Tunmarsh Centre.
Contact them on: 020 8475 2304



Join Newham Parent Carer Forum today

Lastly – We would love you to join us. If you would like to become a member and make sure your voice is heard then have a quick look at the Q&A and then join via the link below.

🗨️ Question: If I join Newham Parent Forum, what will I have to do?

🗨️ Answer: A little or as much as you feel comfortable with. So:

- ✅ Join as a member and just receive information
- ✅ Join us just for coffee morning or evening catch up and a friendly chat
- ✅ Join us for events and workshops whenever you can
- ✅ Get more involved in the steering group of the forum
- ✅ Get involved with the work we do with the Local Authority as a parent rep (training & some payment for your time is available)
- ✅ Training and development opportunity to become a steering group member in the future

https://docs.google.com/forms/d/e/1FAIpQLSeQ4Ja_aWIB4mlxv_ThKrtA4u21sLRELZtNQbeKkcFmHbd9NQ/viewform

You can also follow us on twitter and Facebook via the links below:

Twitter - (@NPF_SEND_Parent): https://twitter.com/NPF_SEND_Parent?s=08

Facebook – Newham Parent Forum - <https://www.facebook.com/groups/966092180074330/?ref=share>

You can also find us on the Local Authority Local Offer page: www.families.newham.gov.uk